

RYKER SPORT



PACKAGE HIGHLIGHTS

- Exciting and thrilling ride
- Designed for fun
- Bold sport styling
- Added comfort and convenience

SHOWN WITH INTENSE BLACK PANELS

SPORT
MODE* / **UFI** / **ECO***

ENGINE

Type	Rotax® 900 ACE™ in-line 3 cylinders, liquid-cooled with electronic fuel injection and electronic throttle control
Bore & Stroke	2.9 x 2.7 in. (74 x 69.7 mm)
Power	82 hp (61.1 kW) @ 8,000 RPM
Torque	58.3 lb-ft (79.1 Nm) @ 6,500 RPM

TRANSMISSION

Type	Automatic (CVT) with reverse function
------	---------------------------------------

CHASSIS

Front Suspension	Double wishbone
Front Shock Type/Travel	KYB® HPG with preload adjustment 6.34 in. (161 mm)
Rear Suspension	Multi-link – mono swing arm
Rear Shock Type/Travel	KYB HPG with remote reservoir 4-position compression adjustable damping and preload adjustment / 6.65 in. (169 mm)
Electronic Brake Distribution System	Foot-operated, hydraulic 3-wheel brake
Front Brakes	270 mm discs with Nissin 2-piston floating calipers
Rear Brake	220 mm disc, 1-piston floating caliper
Parking Brake	Park lock
Front Tires	MC 145/60R16 66T
Rear Tire	MC 205/45R16 77T
Aluminum Front Rims	5-spoke, Deep Black, machined and tinted, 16 x 4.5 in. (406 x 114 mm)
Aluminum Rear Rim	5-spoke, Deep Black, machined and tinted, 16 x 6.5 in. (406 x 165 mm)

CAPACITY

Rider Capacity	1
Maximum Vehicle Load	438.7 lb (199 kg)
Storage Capacity	1.85 gal (7 L)
Fuel Capacity	5.28 gal (20 L)
Fuel Type	Premium unleaded

DIMENSIONS

L x W x H	92.6 x 59.9 x 42.2 in. (2,352 x 1,522 x 1,073 mm)
Wheelbase	67.3 in. (1,709 mm)
Seat Height	24.7 in. (629 mm)
Ground Clearance	4.0 in. (101 mm)
Dry Weight	642 lb (291 kg)

INSTRUMENTATION

Type	4.5 in. (11.4 cm) digital display
Main Functions	Speedometer, tachometer, odometer, trips, distance to empty, engine lights, fuel gauge, clock, ECO mode and Sport mode

SAFETY & SECURITY

SCS	Stability Control System
TCS	Traction Control System
ABS	Anti-lock Braking System
Anti-theft System	Digitally Encoded Security System (D.E.S.S.™)
HHC	Hill Hold Control

COVERAGE

Factory Warranty	1-year BRP limited warranty with 1-year roadside assistance
Extended Service Terms	B.E.S.T. terms available from 12 to 36 months with roadside assistance

FEATURES

2 halogen headlamps (55 W), front fenders with integrated LED lights, dual USB port, glove box, full rear fender, sport comfort seat, MAX mount structure, sport-style trims and finishes, cruise control, Sport mode

can-am

Classic series¹



Intense Black Adrenaline Red Yellow Shock

Epic series



Carbon Black Immortal White Liquid Steel

Exclusive series²



Heritage White II



Heritage White IV



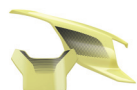
Heritage Yellow



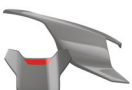
Icepop Blue



Mint Freeze



Lemon Twist



Silver Lava



Sonic Silver



Liquid Gold



Gold Rush



Sandstorm

New panels



Diablo Red



Blue Abyss



Goblin Green



Purple Galaxy

Feature highlights



Cruise control

No need to hold the throttle at all times, the cruise control can be switched on to maintain a selected speed.



Full KYB HPG shocks

Front and rear KYB HPG shocks with rear remote adjuster for different riding experiences.



Max mount structure

Makes the unit 1+1 ready. It also increases the carrying capacity for different storage options.



Sport mode

Allows you to have more fun on paved roads. Sport mode loosens the traction control of the rear wheel, enabling you to perform controlled drifts.



Driveshaft

Highly durable and robust driveshaft technology will help you enjoy a smooth ride all along the way. No need for further adjustment, alignment or maintenance.



Sport-style TRIMs and finishes

Modern design with a sleeker look for sport-style enthusiasts.